



PRINCETON UNIVERSITY 2026 Campus Plan

September 19, 2016

**URBAN
STRATEGIES
INC** ■

In association with:

Vanasse Hangen Brustlin, Inc.
Michael Van Valkenburgh Associates Inc.
KPMB Architects
BFJ Planning
Burns & McDonnell
Level Infrastructure
Mills + Schnoering Architects

Nitsch Engineering
Rickes Associates Inc.
Sustainable Water
Two Twelve
U3 Advisors
Van Note-Harvey Associates
Vermeulens
ZGF Architects

Overview of the presentation

- Purpose and need for the 2026 Campus Plan
- The team, study area, timeline and consultation to date
- Key projects from the University's Strategic Planning Framework
- Preliminary considerations
- Next steps

Purpose of the Campus Plan

- Guides thinking about the physical evolution of the campus
- Provides a framework to inform decision making

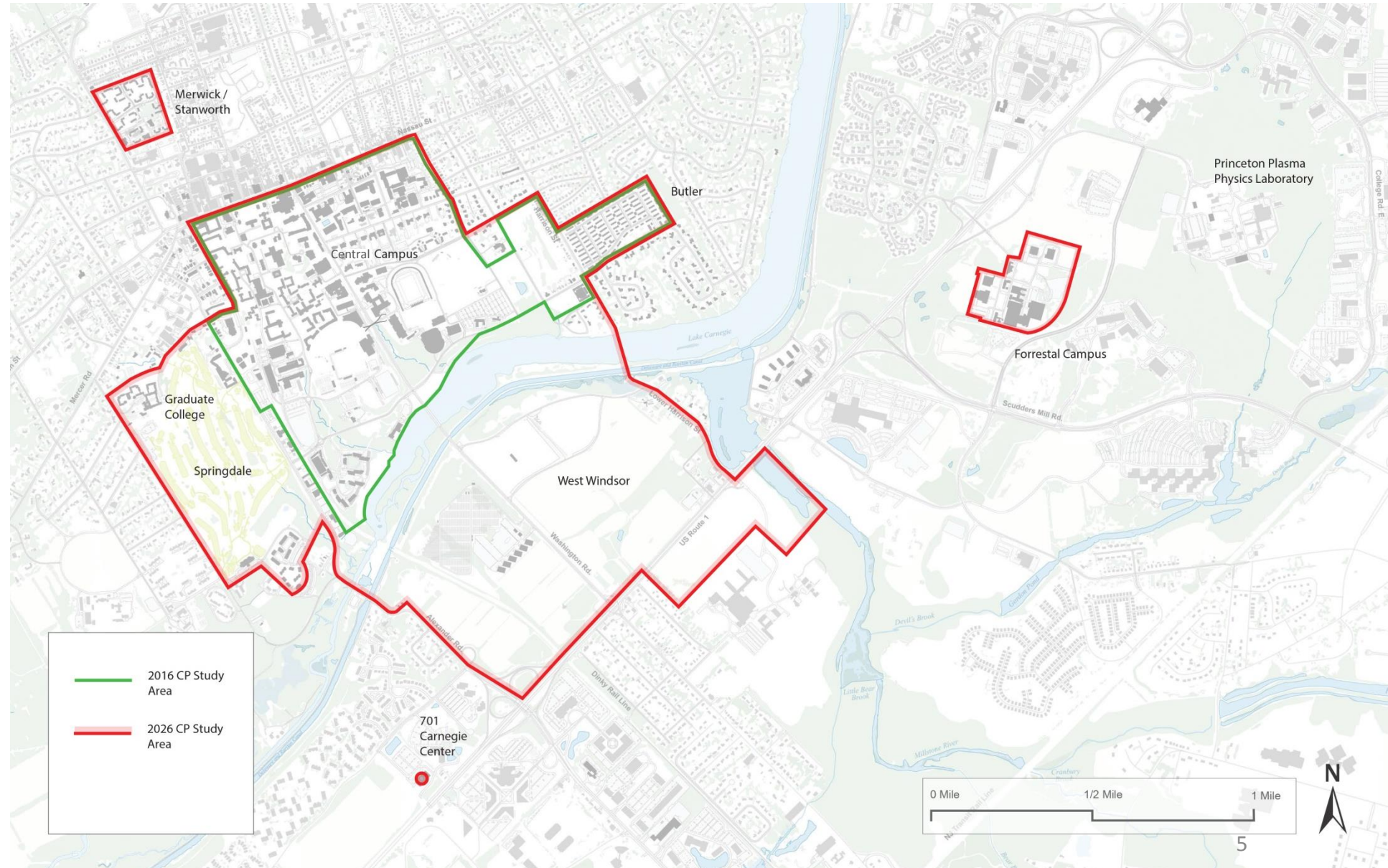
The need for a renewed Campus Plan

The planning horizon of the 2016 Campus Plan is drawing to a close and it is time to develop a new plan that will guide the next period of campus evolution.

The 2026 Plan will consider both current priorities and longer-term possibilities.

Study area and time horizons

A comprehensive Campus Plan considering most of Princeton's lands with an intermediate horizon of 10 years, and a longer-term horizon of 30 or more years



Note: Not all lands within the study area are owned by Princeton University (e.g., eating clubs)

The Campus Plan team

Urban Strategies Inc.

Lead consultant, campus planning and design, project management and coordination of studies, stakeholder engagement

BFJ Planning

Transportation & parking planning

Burns & McDonnell

Infrastructure master plan engineers

KPMB Architects

Architecture

Level Infrastructure

Sustainable infrastructure

Michael Van Valkenburgh Associates Inc.

Landscape architecture

Mills+Schnoering Architects

Heritage architecture

Nitsch Engineering

Stormwater management and resiliency planning

Populous

Athletic facility needs assessment

Rickes Associates

Space utilization and needs assessment

Sustainable Water

Water re-use

Transsolar

Climate Engineering

Two Twelve

Way-finding

Vanasse Hangen Brustlin Inc.

Civil and transportation engineering

ZGF Architects

Science and engineering programming

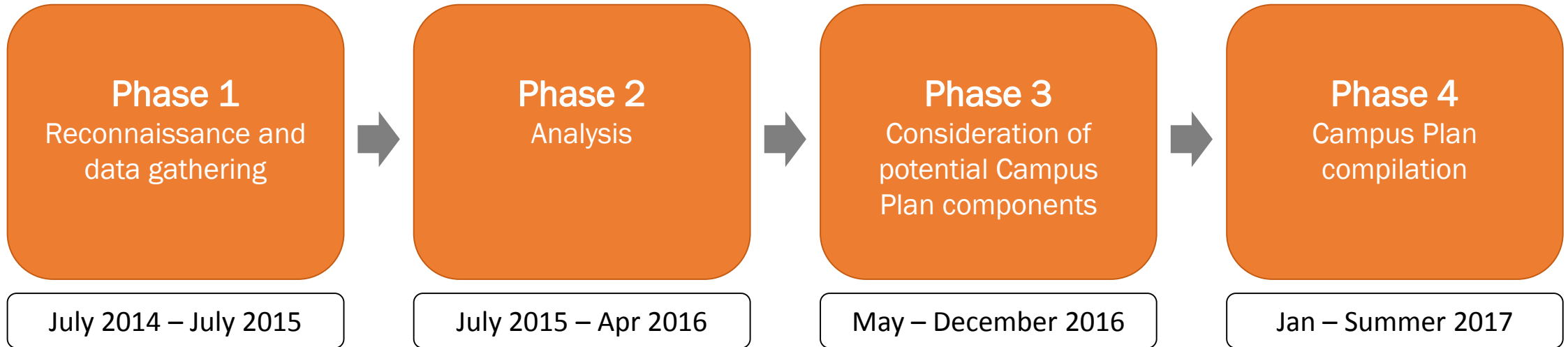
Van Note Harvey Associates

Surveying and civil engineering

Vermeulens

Cost estimation

Schedule



Consultation to date

Meetings with:

- Undergraduate and graduate students
- Faculty
- Staff
- Alumni
- Municipal officials
- County officials
- State officials and planning agencies

Consultation to date

www.princetoncampusplanblog.com

The screenshot shows the homepage of the Princeton University 2026 Campus Plan blog. At the top, there is a navigation bar with the logo for 'URBAN STRATEGIES INC.' and links for 'ABOUT THE PROJECT', 'FURTHER READING', 'COMMENTING CODE OF CONDUCT', 'CONTACT', and 'CAMPUS COMPASS'. The main header features a large image of a Princeton archway with the text 'Princeton University 2026 Campus Plan'. Below this, there is a 'Welcome!' section with a post by Urban Strategies Blog Moderator from December 15, 2014. To the right of the welcome text is a red button that says 'CAMPUS MAPPING TOOL' and 'CLICK HERE TO START'. Below the welcome section is a 'Recent Activity' section with a light blue background, stating 'More news and updates coming, check back soon!'. At the bottom, there is an 'Introducing Campus Compass!' section with a post by Urban Strategies Blog Moderator from April 15, 2015, and a 'No current discussion' message with a 'JOIN THE CONVERSATION' button.

A graphic for the 'CAMPUS COMPASS' tool. It features a map of the Princeton campus with several red circular icons containing a white shield with a red 'P' (Princeton's logo) placed at various locations. A red dotted line connects one of these icons to a large red speech bubble on the right. Inside the speech bubble, the text reads 'CAMPUS COMPASS' in large white letters, followed by 'Map your activity, share your ideas' and the website URL 'princetoncampusplanblog.com'. A red vertical bar on the left contains a white mouse cursor icon pointing at a red circular icon with a white shield and 'P'.

The screenshot shows the 'Campus Compass' interactive tool interface. At the top, there is a navigation bar with the same links as the homepage. The main heading is 'Campus Compass' with 'Question 1 of 20' below it. The question asks 'Where and how do you spend your time on campus?' and provides instructions: 'Select, drag, and place the icons that describe your typical activities on campus to the applicable locations.' Below the instructions is a list of icons: 'Duke Church', 'Catharine', 'Inscribed Stone', 'Coke Garden', 'Coke Stairs', 'MUP', 'E1', 'Risks', 'Scaevola', 'The Great Hallway', and 'Other'. A map of the campus is shown with these icons placed at various locations. A 'Submit' button and a 'Remove Marker' button are visible on the map. At the bottom, there is a progress bar showing '0% Completed' and 'Next >' button.

A screenshot of the 'Campus Compass' user selection dropdown menu. The heading is 'Campus Compass' and the text says 'Please choose the category that best describes you by using the dropdown menu to understand the perspective from which you answer questions.' Below this is a 'User Type:' label and a dropdown menu with the following options: 'Undergraduate', 'Undergraduate' (highlighted in blue), 'Graduate', 'Faculty', 'Staff', 'Alumnus/Alumna', and 'Member of the Community'. To the left of the dropdown is a 'Submit and Continue' button. At the bottom, there is a red navigation bar with the heading 'NAVIGATE' and links for 'About the Project', 'Further Reading', 'Commenting Code of Conduct', 'Contact', and 'Campus Compass'.

Campus Plan Principles

- Provide an integrated environment for teaching, living, learning and research
- Enhance the campus's distinctive sense of place
- Foster a setting that is welcoming and supportive and encourages positive interaction and exchange
- Create a climate that encourages thoughtful and creative approaches to sustainability
- Serve communities that extend beyond the campus

Key Projects from the Strategic Planning Framework

School of Engineering and Applied Science (SEAS)

Facilities to:

- Accommodate projected growth of SEAS program and enrollment
- Strengthen academic collaboration – promoting synergies within SEAS and with other Princeton departments
- Improve research and teaching space – ensuring it is functional, flexible, convenient and efficient
- Improve learning environments – promoting active learning in shared settings

Key Projects from the Strategic Planning Framework

Environmental Studies

Facilities to:

- Enhance collaboration and provide improved space for Princeton Environmental Institute, Ecology and Evolutionary Biology, and Geosciences
- Support current and future scholarship, research and teaching

Key Projects from the Strategic Planning Framework

Innovation

Facilities to:

- Expand or create physical spaces that complement the University's existing innovation ecosystem (such as Princeton Entrepreneurship Hub at 34 Chambers Street) including:
 - Incubator spaces
 - Maker spaces
 - Accelerator spaces
 - Partnership spaces

Key projects from the Strategic Planning Framework

Residential

Facilities to:

- Support and accommodate:
 - Undergraduate students
 - Graduate students/post-docs

Key Projects from the Strategic Planning Framework

Sustainability

- Promote sustainability through holistic and integrated planning

Campus Plan elements of the Sustainability Plan in green; additional Sustainability Plan elements in white.



Preliminary considerations

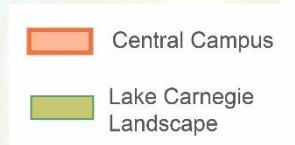
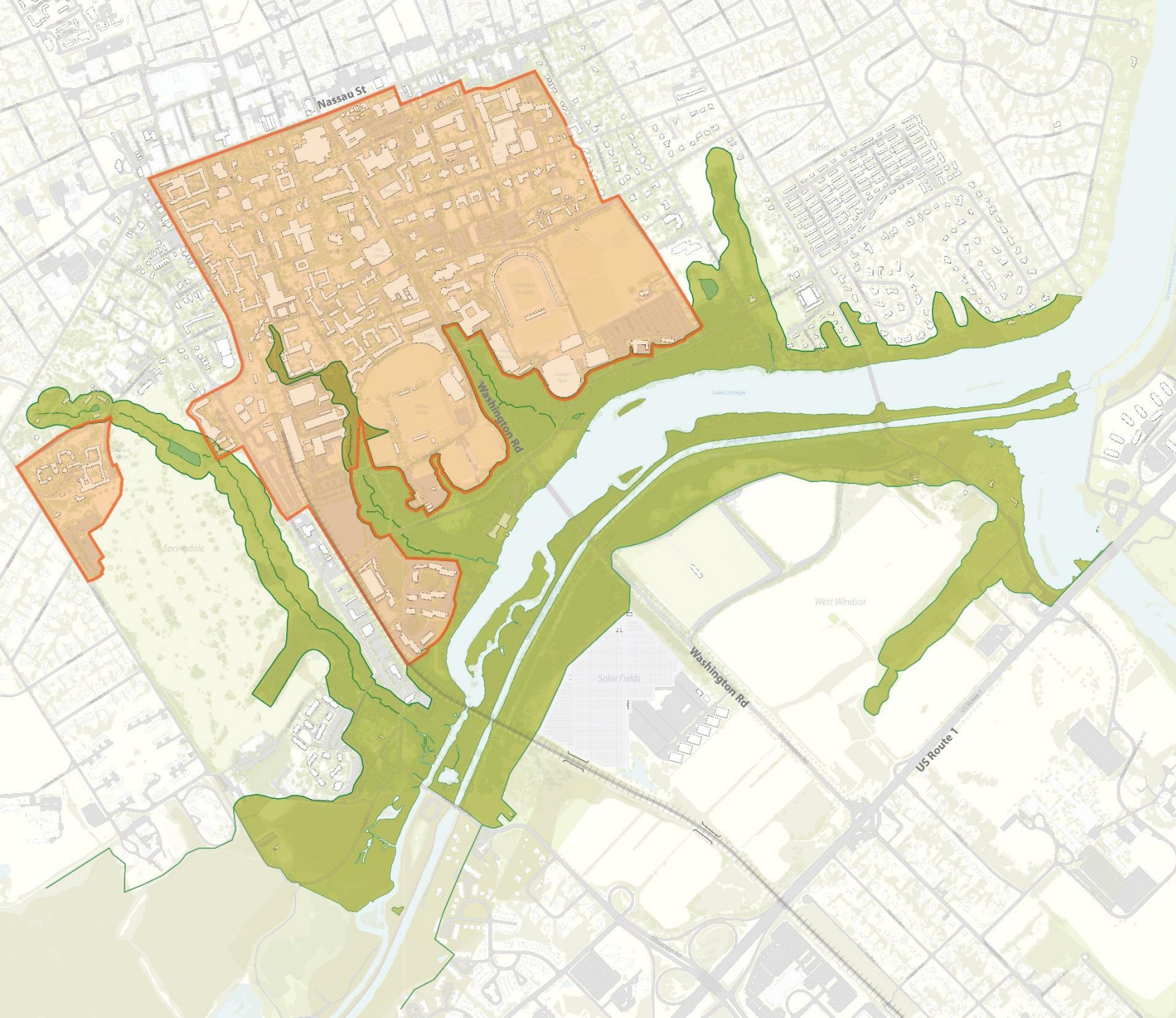
Strategic development of the Central Campus

- Focus on accommodating current and future academic needs
- Prioritize adaptation of underutilized facilities and strategic use of key sites
- Reserve some sites for priority uses in the long term
- Better integrate all campus lands

Preliminary considerations

Enhance and accentuate the Lake Carnegie landscape

- Integrate it into the experience and function of the full campus
- Continue to extend and restore the woodland fingers (including the Springdale and Broadmead areas)
- Enhance the experience around the Lake, including access to the Canal towpath and trails



Preliminary considerations

Explore potential locations for University-related housing (faculty, staff, post-doc, graduate students) and affordable housing

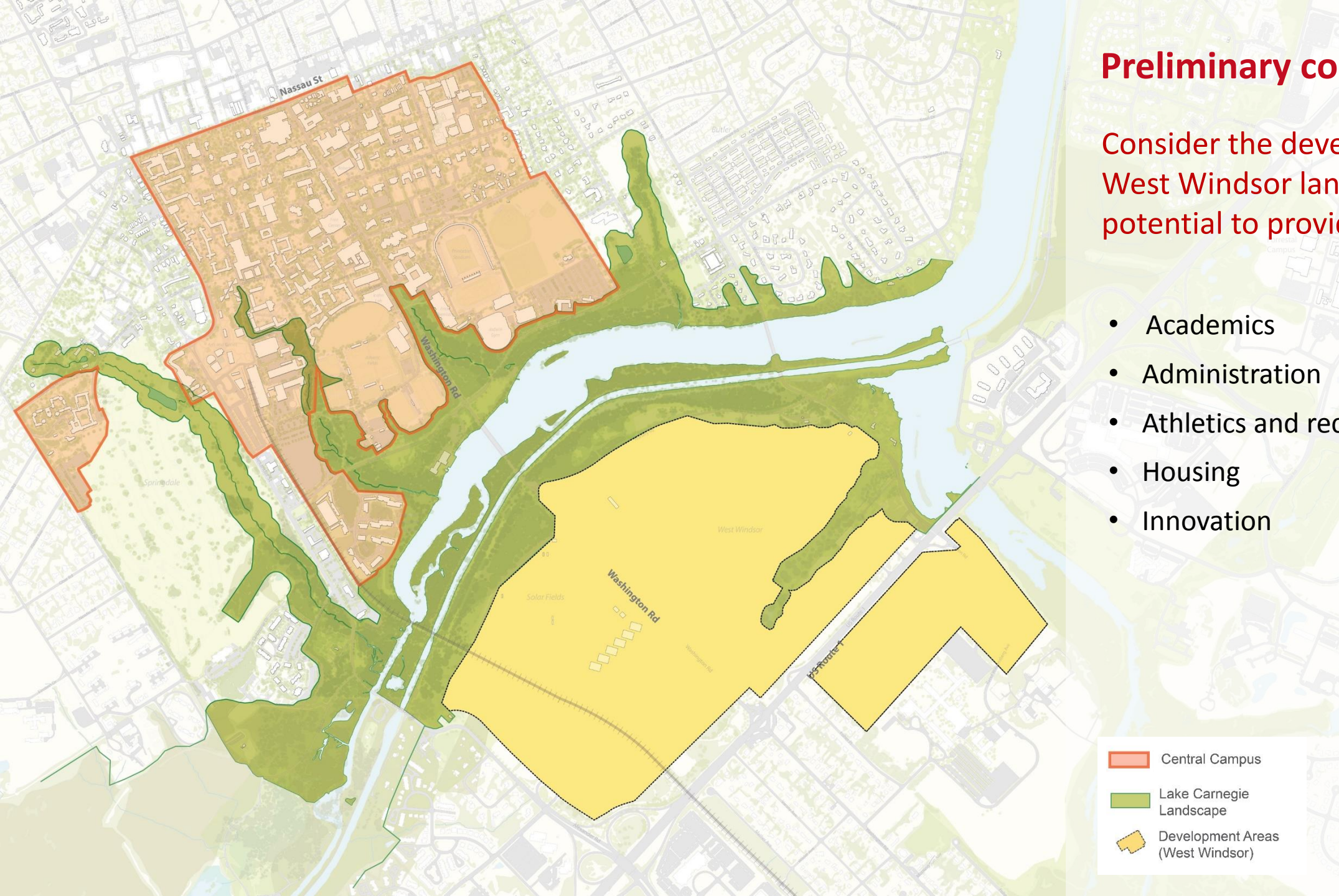
- Butler Tract
- Alexander Corridor (in the context of mixed-use development)
- West Windsor



Preliminary considerations

Consider the development of the West Windsor lands with the potential to provide space for:

- Academics
- Administration
- Athletics and recreation
- Housing
- Innovation



- Central Campus
- Lake Carnegie Landscape
- Development Areas (West Windsor)

Preliminary considerations

Reserve the Springdale lands for long-term use to support Princeton's educational mission

- Improve natural settings and habitat
- Improve public access
- Recognize the benefits of proximity to Central Campus, Lewis Center, Forbes College, Graduate College

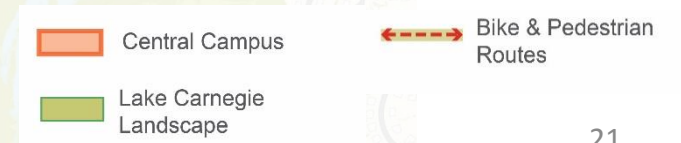
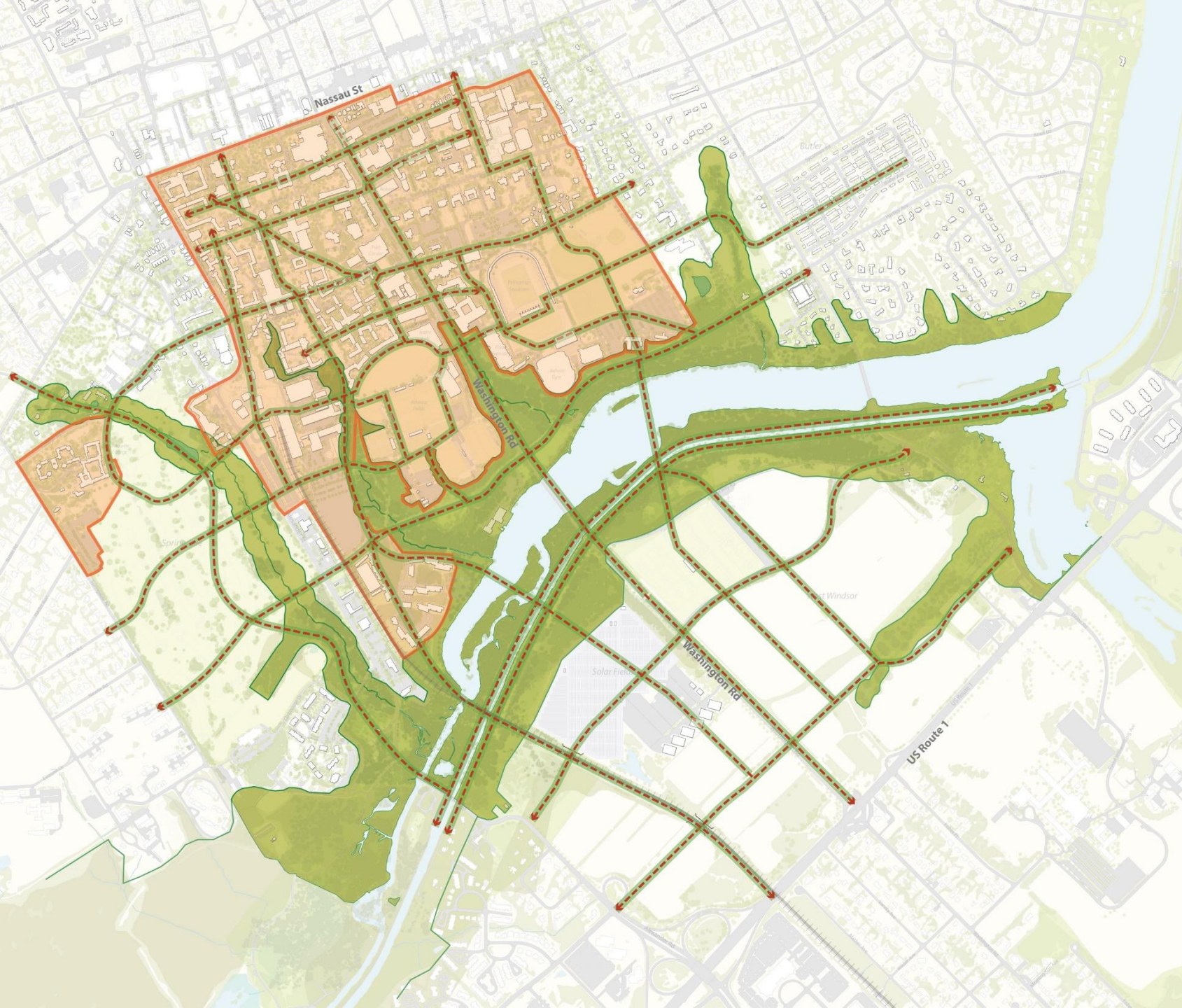


- Central Campus
- Lake Carnegie Landscape
- Development Areas (Springdale)

Preliminary considerations

Promote walking and cycling to and through the campus

- Expansion and improvement of the cycling and pedestrian network, on campus and into the community
- Strategies for reducing parking demand
- Improvement and enhancement of transit options
- Potential improvements to traffic flow along and across Route 1



Next Steps

Complete Phase 3 (end of December, 2016):

- Continued exploration of key projects from the Strategic Planning Framework
- Development of campus systems within which the projects will be sited (e.g. landscape, circulation, infrastructure, sustainability, etc.)
- Alignment of campus systems with regional and community context
- Further consideration of intermediate and longer-term options

Initiate and complete Phase 4 (to end of summer, 2017):

- Review, refinement, and completion of the Campus Plan Framework

For more information and to submit questions/comments please visit:

www.princetoncampusplanblog.com



PRINCETON UNIVERSITY 2026 Campus Plan

September 19, 2016

**URBAN
STRATEGIES
INC** ■

In association with:
Vanasse Hangen Brustlin, Inc.
Michael Van Valkenburgh Associates Inc.
KPMB Architects
BFJ Planning
Burns & McDonnell
Level Infrastructure
Mills + Schnoering Architects

Nitsch Engineering
Rickes Associates Inc.
Sustainable Water
Two Twelve
U3 Advisors
Van Note-Harvey Associates
Vermeulens
ZGF Architects